



**WHERE TO LOCATE SMOKE ALARMS:**

Alarms are to be located on every level of a residence: basement, first floor, second floor, (excluding crawl spaces and unfinished attics) and in every separate sleeping area, between sleeping areas and living areas such as the kitchen, garage, basement or utility room. In homes with only one sleeping area on one floor, an alarm is to be located in the hallway outside the bedrooms as shown in Figure 1 below. In multi-level homes, alarms should be located outside of sleeping areas and at every finished level of the home as shown in Figure 3 below. Basement alarms should be located in the bottom of the basement stairwell as shown in Figure 2 below.

**WHERE TO LOCATE CARBON MONOXIDE ALARMS:**

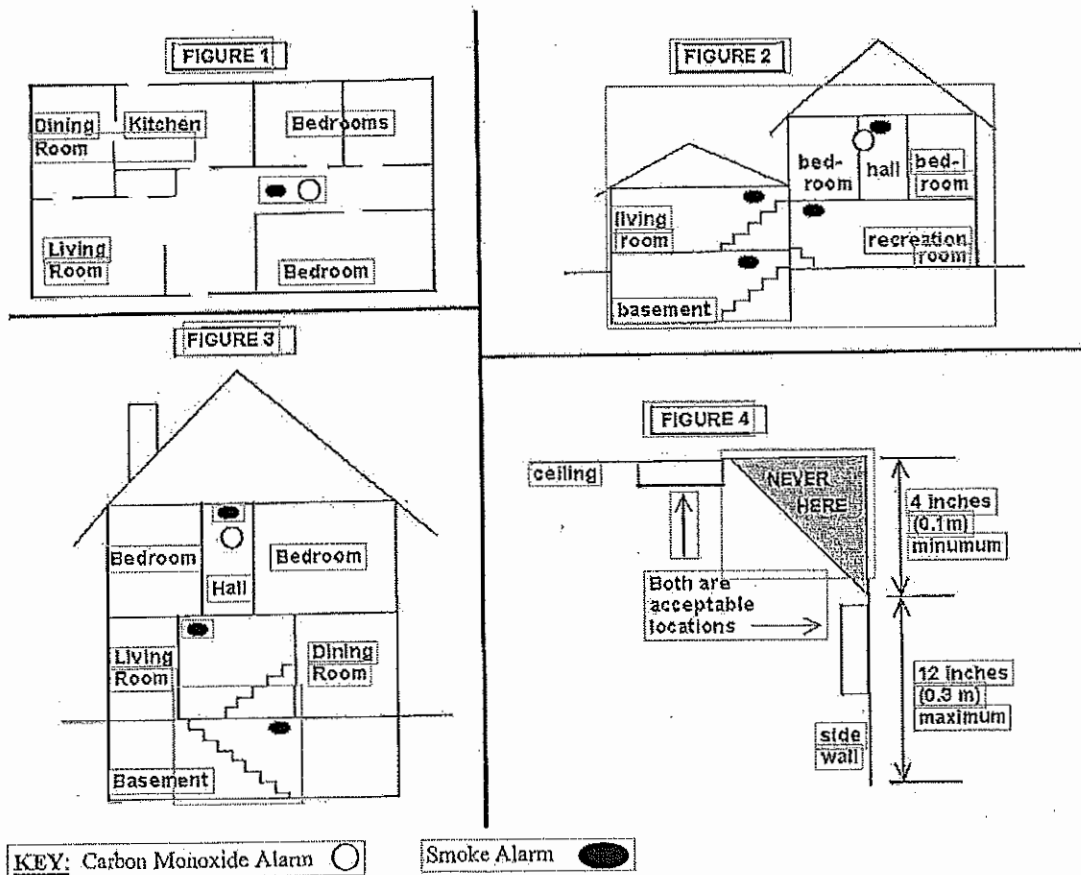
Alarms are to be located in the immediate vicinity of all sleeping areas. Alarms must be installed in accordance with NFPA 720. Alarms are not required in structures that do not contain any fuel burning appliances or attached garages.

**WHERE NOT TO LOCATE SMOKE ALARMS:**

To avoid false alarms and/or improper operation, do not install smoke alarms in the following areas:

1. KITCHENS: Smoke from cooking may cause nuisance alarms.
2. BATHROOMS: Excessive steam from a shower may cause alarm activation.
3. The "dead air" space where the ceiling meets the wall as shown in Figure 4, and
4. The peak of an "A" frame type of ceiling where "dead air" at the top may prevent smoke from reaching the alarm.

*Please note:* If smoke alarms are currently electrically powered they **must** remain electrical. Carbon monoxide alarms must be installed in accordance with NFPA 720. New battery-operated smoke alarms must be a 10-year sealed battery unit. Portable fire extinguisher must be installed according to requirements on the next page.



**Requirements for the type and placement of a portable fire extinguisher:  
As of November 15, 2005**

1. At least one portable fire extinguisher shall be installed in all one and two family dwellings upon change of occupancy.
2. The extinguisher shall be listed, labeled, charged, and operable.
3. The size shall be no smaller than **2A:10-B:C**, rated for residential use and weigh no more than 10 lbs.
4. The hangers or brackets supplied by the manufacturer must be used.
5. The extinguisher must be within 10 feet of the kitchen.
6. The top of the extinguisher must not be more that 5 feet above the floor.
7. The extinguisher must be visible and in a readily accessible location, free from being blocked by furniture, storage, or other items.
8. The extinguisher must be near a room exit or travel path that provides and escape route to the exterior.
9. The extinguisher must be accompanied by an owner's manual or written information regarding the operation, inspection, and maintenance of the extinguisher.
10. The extinguisher must be installed with the operating instructions clearly visible.